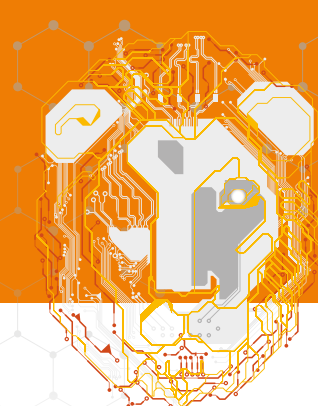




LION – LINE MANAGER

Your Digital Gate To Manufacturing



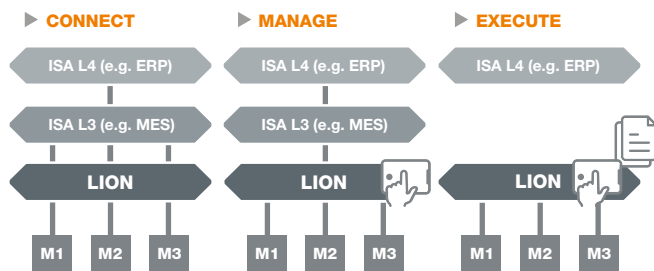
LION is a flexible, scalable solution for the challenges of line connections and control systems. The customizable framework supports a variety of production line topologies. Higher-level systems such as MES can also be connected. All connections are made via standardized interfaces.

SITUATION

- How much time does it take to create and summarize line batch reports?
- What are the necessary KPIs for effective line control and optimization?
- How many problems do operators have with different user interfaces and how much training is required?
- How many different interface technologies are in use?

BENEFITS

- Through a data-centric approach across all units or machines, all data is stored for the line in one place, eliminating the need for manual consolidation and information preparation. This allows you to save up to 20% of time.
- A standardized transfer of consolidated data to higher-level systems for effective preparation and calculation of KPIs – be it line-related or cross-line with multiple line managers.
- One user interface: central visualization of the complete production line.
- Standard interfaces: Data integrity through harmonization of interface technologies between different systems.
- Potential for process optimization: Make more of your data and optimize your batch change, retooling, OEE with new technologies – data analysis and mixed reality.



The most frequently used standard versions of LION

CONTACT

Frederik Thiele
Product Manager
Phone: +49 721 6634 357

